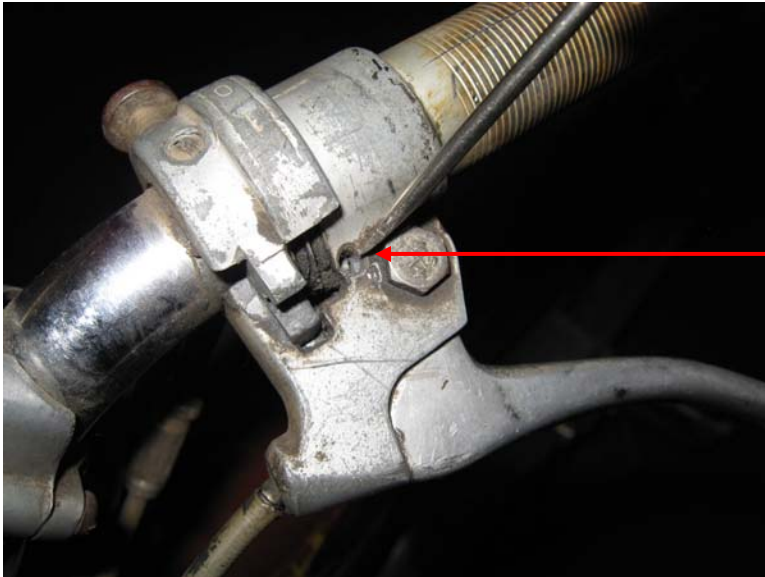
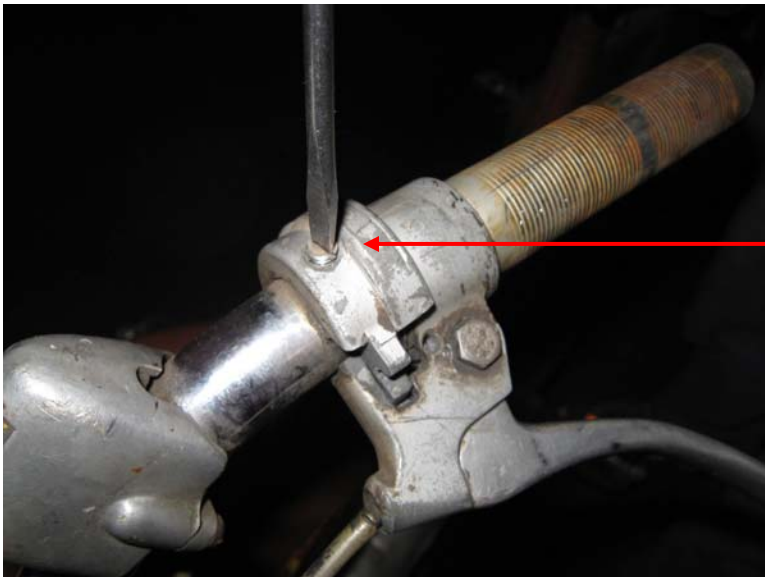


Puch Moped Shift Cable Installation instructions 1954-1964



Step 1: Loosen set screw for shift cable central nipple



Step 2: Loosen the two set screws that hold the gearshift housing to the handlebar

Step 3: Run both of the cylindrical adjuster nuts on the cable elbows (hand lever end) up; to create maximum cable slack.



Step 4: Disconnect both the first speed cable and the second speed cable from the gearshift linkage on the engine & frame



Step 5: Slide complete control assembly (Left side) off of the handlebar



Step 6: Separate Gear Shift Control Housing from the rest of the assembly. Then remove old cable and discard.

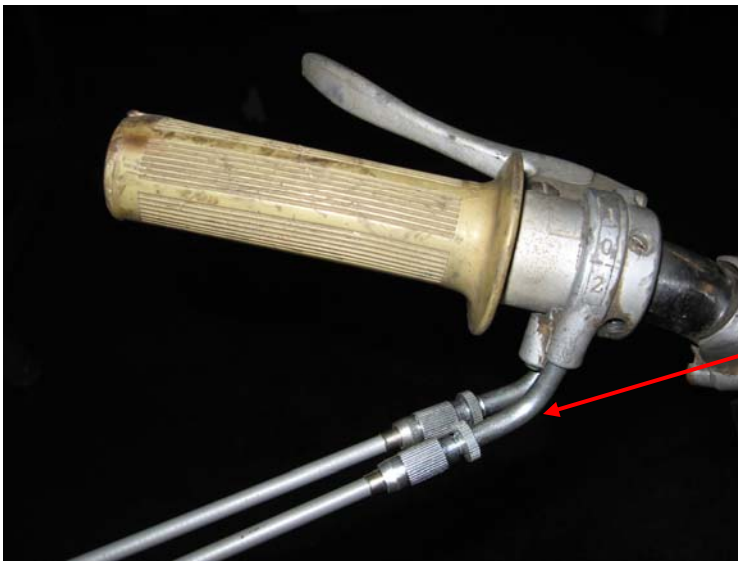


Step 7: Fit new shift cable. Short end of the cable (the end with the stepped end cap) fits into the rear hole in the gearshift housing. This is the hole marked with #2. Secure mid-line cable nipple, by inserting long end of nipple into the hand grip assembly, and then secure by means of set screw.



Step 8: Make sure that the cable is properly wrapped around the twist grip assembly.

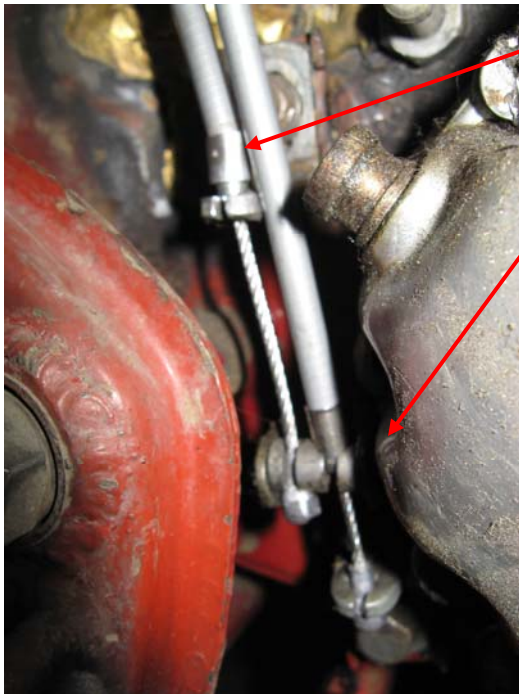




Step9: re-fit shift control assembly complete to handlebar. Pay special attention to position of short leg of cable (end with stepped end cap).



Step 10: Feed the cable through the moped body



Step 11: Connect both the 1st speed & second speed shift cables to the engine linkage & frame

Step 12: LAST STEP!
Now adjust the two adjusters at the hand lever to take up any slack. Test the moped for correct shift operations by rolling moped and shifting as normal. Before running and riding be sure to adjust clutch cable also.

